



HAND IN HAND  
ZIMBABWE



# PROFILE

[www.handinhand.co.zw](http://www.handinhand.co.zw)







## OVERVIEW

HAND IN HAND IS A GLOBAL NETWORK WORKING TO END POVERTY

We help women and youth living in poverty to beat the odds and succeed as entrepreneurs. Our tested entrepreneurship method delivers financial literacy, business acumen, market linkage and a voice for under employed, mostly rural people. The money they earn and the confidence they gain changes everything. Whole families and communities rise with them.

Started in India in 2003, Hand in Hand helps fight poverty in Afghanistan, India, Kenya, Tanzania and Zimbabwe. So far, we have helped more than 3 million women launch microbusinesses that can stand the test of time. Some are smallholder farmers learning to stand up to climate change. Some are refugees trying to start a new life after running from conflict. Others are vulnerable young women and girls starting to dream – and plan – for the future.



# **HAND IN HAND ZIMBABWE**

We are a private voluntary and non-profit organization that helps marginalized people in rural communities –particularly women and youth – to create better livelihoods for themselves and their families. The Hand in Hand method works in four key stages – First, we create Self-Help Groups where women and youth support each other, save together and learn together. Next, we provide business and skills training that helps make the most of their potential. Third, we make sure they can get loans and the tools they need to get started. Last, we help scale up their businesses, reaching bigger markets and stronger supply chains.

Our business and skills training is delivered through a six (6) module business development training programme which empowers project participants to start small enterprises. With continuous support and mentoring by Hand in Hand Zimbabwe staff, these small businesses grow and become viable enterprises.

## **VISION**

Our Vision is to "Build Socio Economically Resilient Communities".

## **MISSION**

To eradicate poverty amongst the resource constrained rural and peri-urban communities through entrepreneurship, capacity building and empowerment of women and youth.

## **OUR OPERATIONAL VALUES**

Pro-resource limited and bottom up approach.  
Transparency and accountability in all actions.  
Working in co-ordination with local / community structures.  
Active participation of women for equitable socio-economic development.  
Adherence to vision, mission and objectives.

## **TARGET GROUP**

The rural poor - mainly women and youth.  
Small-scale entrepreneurs in need of skills to grow and develop their microenterprises.



# WHERE WE WORK?

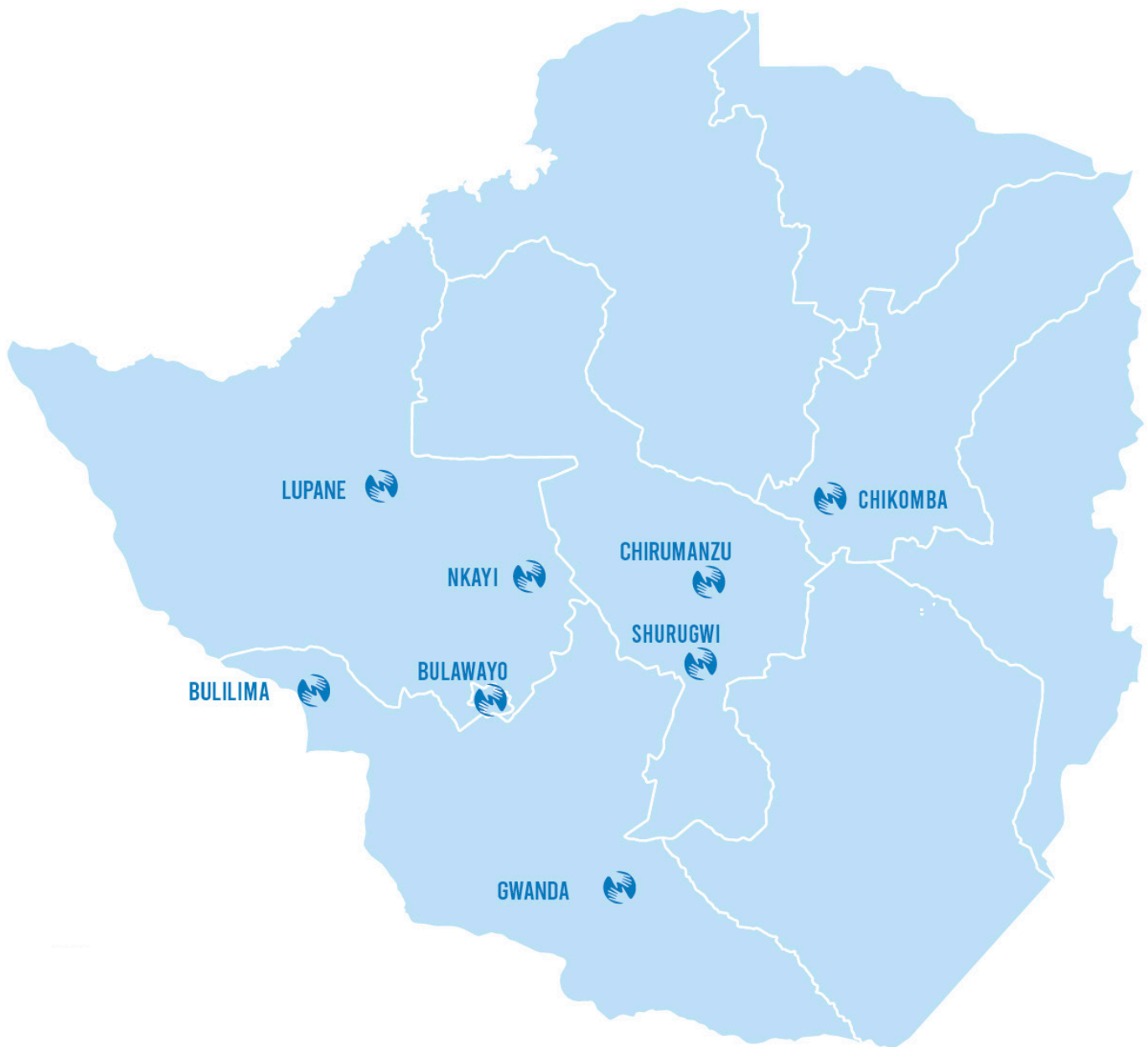
Hand In Hand Zimbabwe

73 Heyman Road, Suburbs Bulawayo, Zimbabwe

T: +263 86 77 114 4443 / +263 29 223 1047-8 / +263 29 225 0388

E: [info@handinhand.co.zw](mailto:info@handinhand.co.zw)

W: [www.handinhand.co.zw](http://www.handinhand.co.zw)





## LOOK AT POVERTY DIFFERENTLY

You'll see entrepreneurs, full of energy and ideas. We help turn their potential into jobs. They find a way out of poverty.

### HERE'S HOW

## STEP 1 MOBILISE SELF-HELP GROUPS

Financial literacy training  
Group savings funds  
Loans between members

## STEP 2 PROVIDE BUSINESS TRAINING

Bookkeeping  
Marketing  
Customer care

## BUSINESSES LAUNCHED OR IMPROVED

## STEP 3 PROVIDE CREDIT OR TOOLKITS

DIRECT OR THROUGH PARTNER

Business scaled up  
Credit history built

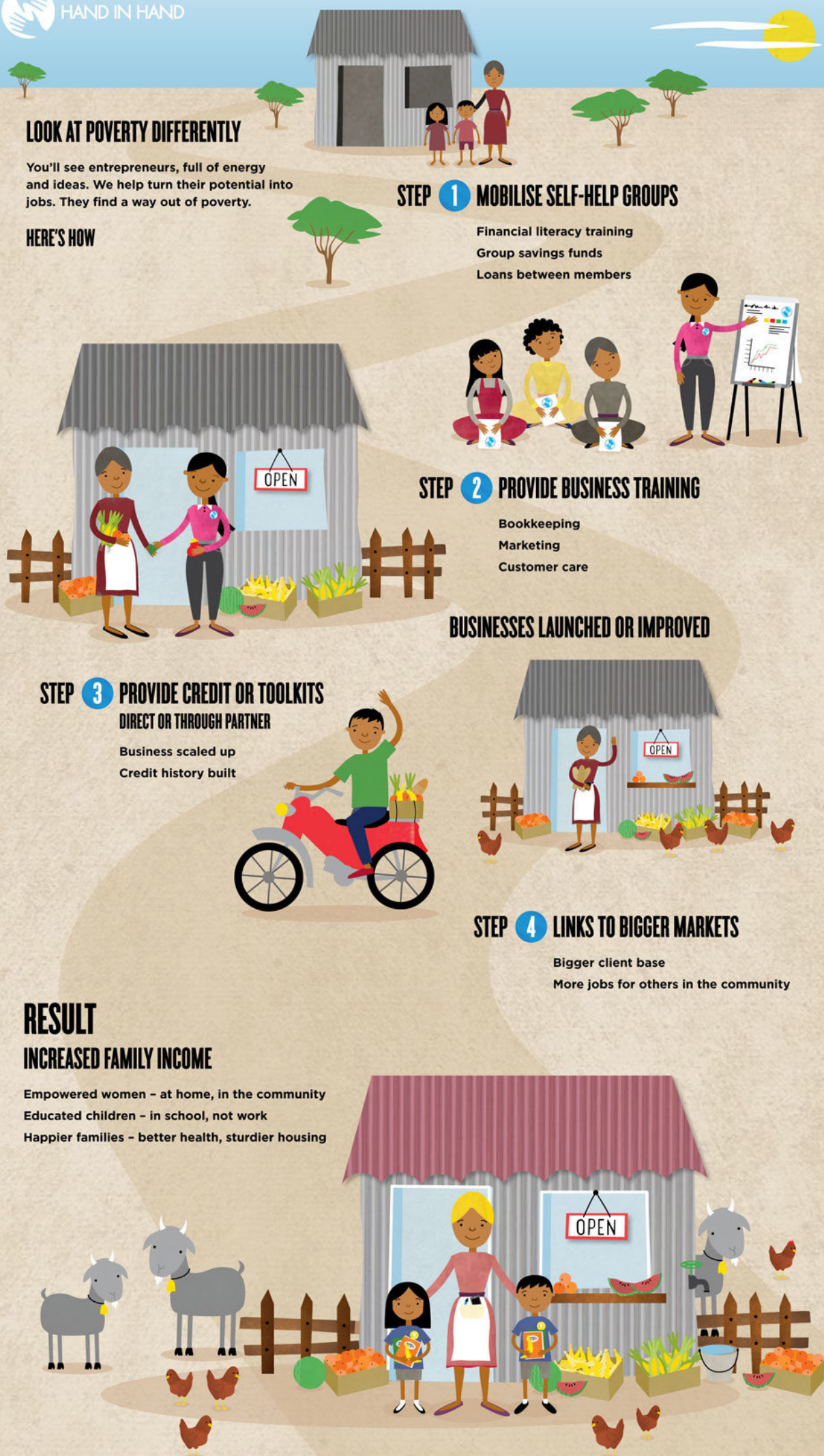
## STEP 4 LINKS TO BIGGER MARKETS

Bigger client base  
More jobs for others in the community

## RESULT

### INCREASED FAMILY INCOME

Empowered women – at home, in the community  
Educated children – in school, not work  
Happier families – better health, sturdier housing





# THEMATIC AREAS OF FOCUS

## WOMEN'S ECONOMIC EMPOWERMENT

Women face barriers that men don't. Right now, in communities across the developing world, roughly 400 million women and girls live below the poverty line of US \$1.90 a day, trapped by restrictive norms and attitudes that keep them from earning their own incomes, controlling their own assets and making decisions for themselves. Inequality between men and women isn't distinct from poverty, in other words – it causes poverty. As long as barriers to women's empowerment are allowed to exist, people will go to bed hungry.

Empowering women entrepreneurs is a process – centred on business, vocational and life skills training – that helps women take control of their finances and speak up to be heard in the home. Ultimately it's not just about money but power, and making sure women have more of both – to seize their own destinies, make themselves heard and raise the next generation out of poverty.

But if addressing the barriers that limit women is good, there's one thing we like even better: smashing them. And to do that, we have to work with men. Across our network, nine out of ten Hand in Hand members are women. The rest are their husbands, brothers and sons. Increasingly, we're working with men to change their ideas about women's contributions to the community and economy, and their own contributions at home. Because when the playing field is evened, women can flourish. And when women flourish, whole families, communities and economies win.





## YOUTH EMPOWERMENT

Hand in Hand Zimbabwe helps turn dreams and aspirations of Zimbabwean youth into reality in a challenging macro-economic environment. By integrating the three components of – entrepreneurship, life skills and motivation, and sexual reproductive health rights – Hand in Hand Zimbabwe is addressing relevant issues affecting Zimbabwean youth. Hand in Hand Zimbabwe values motivation as a key to improving self-aspiration and building individual self-esteem, which eventually leads to the full utilization of one's capacity. The organization also brings in community role models to mentor the youth and share their life stories.



## FOOD SECURITY

The Food Security situation in Zimbabwe remains fragile and unpredictable. Vulnerability in both rural and urban communities has increased and a large number of people are food insecure. Our interventions contribute to increased agricultural production and household income, as well as economic empowerment of women in targeted communities. The organization has an untapped niche of business development that contributes to mitigating food insecurity for small holder farmers.





## WATER SANITATION AND HYGIENE (WASH)

Water, sanitation and hygiene are critical aspects to any community, especially in rural areas which are often ravaged by natural disasters such as climate change induced droughts and flooding. Due to lack of funding, education and resources, key infrastructure interventions are not prioritized, which exacerbates the spread of disease and unsafe living conditions. Hand in Hand Zimbabwe implements Water, Sanitation and Hygiene (WASH) activities in its districts of operation. The interventions seek to address potential causes of waterborne diseases as well as reduce health risks associated with poor water, sanitation and hygiene practices.



## ENVIRONMENT AND CLIMATE CHANGE

In its environment and climate change programming, Hand in Hand Zimbabwe's objective is to improve sustainable economic activities and strengthen resilience to climate change. Its method is to implement climate smart interventions, with a focus on climate resilient agriculture. This includes use of green energy for water and nutritional gardens, crop-trees-livestock interventions, establishment of fodder banks that also serve as carbon sinks, rangeland management for improved pastures, use of green energy powered incubators and promotion of small grains for livestock farmers. The organization has partnered with the Forestry Commission to promote planting exotic and indigenous trees and offer tree planting and care training for small holder farmers. On the same note, the organization partners with Environmental Management Agency (EMA) to raise environmental awareness within communities.





## HEALTH

Hand in Hand Zimbabwe believes that a successful entrepreneur is a healthy person. As such, the organization has deliberately factored in the health aspect in its interventions. Through behaviour change and health trainings the organization endeavours to ensure that youth and other community members are aware of, and are responsible for their own well-being. Interventions include: COVID-19 awareness and support to communities/schools, linking target communities and schools to health service providers for HIV testing, cancer screening, sexually transmitted diseases awareness and screening, as well as sexual and reproductive health and rights awareness raising. Customized health training is offered in partnership with the Ministry of Health and Child Care.



# SUSTAINABILITY OF PROGRAMME ACTIVITIES AND RESULTS

A SUMMARY OF RESULTS JULY 2015 TO APRIL 2021



**2 266**

Number of  
SHGs  
mobilized



**20 136**

Number of  
members  
mobilized



**13 076**

Number of enter-  
prises created or/  
and enhanced



**15 095**

Number of  
jobs  
created

In order to maximize sustainability HiH Zimbabwe's entrepreneurship programme uses a 'help to self-help' model. To achieve this we focus on: providing individuals and groups with knowledge and skills in business development and management, to mobilize their own savings, manage their own family enterprises and finances, and to seek value addition. The Hand in Hand method inspires Self Help Group members to become self-sufficient as they pursue sustainable economic activities that generate a surplus to live on. Furthermore, through the engagement with local partners and local stakeholders, such as community leaders and women's leaders, HiH Zimbabwe ensures that entrepreneurs can receive support after the organization has withdrawn. By applying a participatory approach, the Hand in Hand method ensures that development is in the hands of the programme participants, which enables the entrepreneurs to flourish in their context and adapt to changes over the longer term.







